



**Arkansas Department of Human Services
Monthly Enrollment and Expenditures Report
Calendar Year 2019**

Enrollment at 1st Day of Month

	Arkansas		Medicaid & CHIP	
	Works	Traditional Adults	Children	Total
January 2019	234,400	239,755	404,733	878,888
February 2019	233,870	240,349	405,322	879,541
March 2019	235,962	236,870	409,545	882,377
April 2019	240,177	237,859	416,211	894,247
May 2019				0
June 2019				0
July 2019				0
August 2019				0
September 2019				0
October 2019				0
November 2019				0
December 2019				0

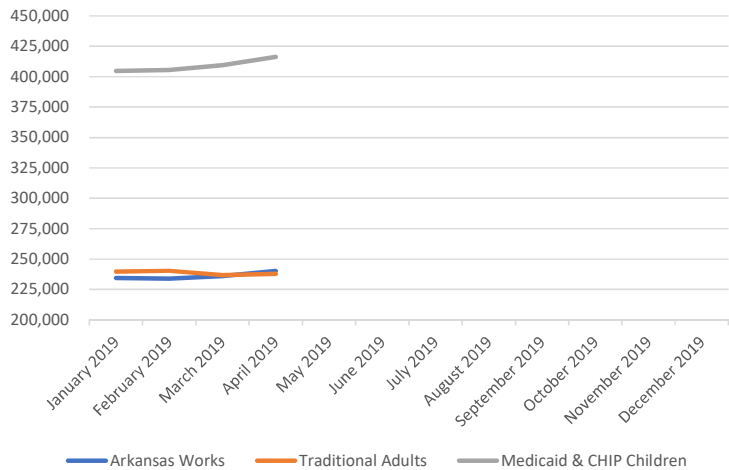
NOTE: Enrollment numbers are based on report ran on the first Monday after the claim cycle that includes in the first day of the month.

Enrollment as of the Last Day of the Month

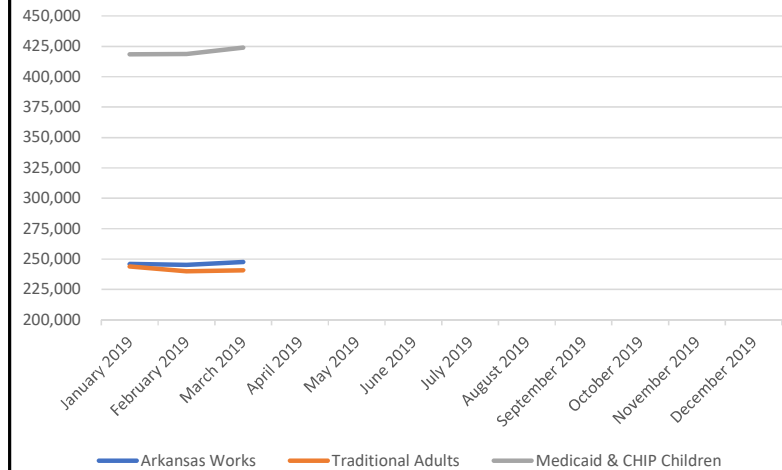
	Arkansas Works		Medicaid & CHIP	
	Traditional Adults	Children	Total	
January 2019	245,857	243,819	418,424	908,100
February 2019	245,198	239,963	418,615	903,776
March 2019	247,631	240,876	423,870	912,377
April 2019				0
May 2019				0
June 2019				0
July 2019				0
August 2019				0
September 2019				0
October 2019				0
November 2019				0
December 2019				0

NOTE: Enrollment numbers are based on report ran on the first Monday after the claim cycle that includes in the first day of the month. January through March 2019 End of the Month Enrollment numbers were ran on April 17, 2019.

Enrollment at 1st Day of Month



Enrollment as of the Last Day of the Month





**Arkansas Department of Human Services
Monthly Enrollment and Expenditures Report
Calendar Year 2019**

Total Spend Per Month - Arkansas Works 1115 Demonstration Premium Assistance Program

	Arkansas Works	Arkansas Works Premiums	Arkansas Works Cost Sharing	Arkansas Works Wrap Services	Total Arkansas Works QHP Program	Arkansas Works PMPM QHP Program	Reconciliation Payments & Non-Claim Adjustments	Arkansas Works PMPM QHP Program After Reconciliations	Budget Neutrality Amount
January 2019	193,186	\$87,787,873.55	\$31,903,617.08	\$676,746.66	\$120,368,237.29	\$623.07	(\$297,227.63)	\$621.53	\$625.39
February 2019	191,587	\$86,734,810.88	\$31,703,014.94	\$686,112.77	\$119,123,938.59	\$621.77	(\$350,995.82)	\$619.94	\$625.39
March 2019	195,886	\$88,558,636.23	\$32,341,434.73	\$701,381.96	\$121,601,452.92	\$620.78	\$30,641,195.04	\$777.20	\$625.39
April 2019									
May 2019									
June 2019									
July 2019									
August 2019									
September 2019									
October 2019									
November 2019									
December 2019									

NOTE: Arkansas Works program has reconciliations done on a periodic basis for cost sharing reduction payments and premium payments made for individuals above 100% FPL. These payments are not included in the claims processing payments due to the material impact on a per member per month amount in the month paid despite the payments being made for previous months. **March 2019 adjustment includes Annual Cost Sharing Reconciliations to QHP Carriers. These amounts are applied to budget neutrality figures for 2016 and 2017 and are not matched against budget neutrality for 2019.**

Total Spend Per Month - Fee For Service

	Newly Eligible	Fee for Service Payments	Newly Eligible FFS PMPM	Traditional FFS	Traditional Medicaid Fee for Service Payments	Traditional Medicaid Fee For Service	Combined Fee For Service	Combined Fee for Service Payments	
January 2019	52,671	\$21,946,332.34	\$416.67	662,243	\$335,885,222.00	\$507.19	714,914	\$357,831,554.34	\$500.52
February 2019	53,611	\$22,694,690.23	\$423.32	658,578	\$487,814,099.00	\$740.71	712,189	\$510,508,789.23	\$716.82
March 2019	51,745	\$28,265,675.04	\$546.25	664,746	\$663,522,160.00	\$998.16	716,491	\$691,787,835.04	\$965.52
April 2019									
May 2019									
June 2019									
July 2019									
August 2019									
September 2019									
October 2019									
November 2019									
December 2019									

NOTE: Fee for service per member per month fluctuates due to timing of claims being paid. Additionally, payment of non-claims activity such as supplemental payments and disproportionate share hospital payments can significantly alter the per member per month amount for the month those payments are made.